

*Congratulations
on your
engagement.*

The Bible Chapel
offers engaged
couples high-quality,
personalized services
for wedding planning
and preparation.

We would love to
work with you.



THE BIBLE CHAPEL

300 Gallery Drive
McMurray, PA 15317
724.941.8990

biblechapel.org

Wedding

Ceremony
Rehearsal Dinner
Reception

Services and Fees

THE BIBLE CHAPEL

CEREMONY

If you are getting married at The Bible Chapel, \$600 includes:

- Secured date
- Main Lobby
- Worship Center
- Rooms for bridal party
- Wedding Rehearsal
- Technical and custodial support
- Premarital course fees and materials
- Secured pastor
- Secured wedding coordinator

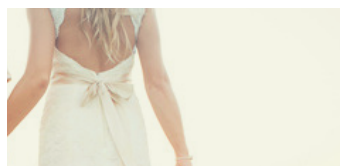
If you are getting married offsite, \$400 includes:

- Secured date
- Premarital course fees and materials
- Secured pastor
- Secured wedding coordinator

Initial deposit for ceremony due two weeks after pastoral interview.



Please make all checks payable to "The Bible Chapel" and indicate "wedding fees" in the memo line.



Mail checks to:
The Bible Chapel
300 Gallery Drive
McMurray, PA 15317
attn: Julie Morris

REHEARSAL DINNER

Rehearsal dinners may be held at The Bible Chapel's South Hills, Robinson, and Wilkinsburg Campuses.

Member Rate: \$15/hour

Non-Member Rate: \$50/hour

Services included:

- Room(s) available directly following rehearsal
- Setup and tear down of tables and chairs
- Onsite custodian
- Kitchen (training required)

Not included:

- Catering. We can suggest professional caterers within our congregation. If you use an outside caterer, he/she will be required to attend a short training session.
- Paper products, coffee, centerpieces, or decorations.
- Linens. These can be rented through The Bible Chapel at an additional cost.

All of The Bible Chapel's facilities are non-smoking and alcohol-free.

RECEPTION

Campus Space and Guest Capacity:

- **South Hills:** Family Life Center, 350
- **Robinson:**
- **Washington:** Life Center, 80-100
- **Wilkinsburg:**

Member Rental Fee: \$400

Non-Member Rental Fee: \$1,000

Services included:

- Space usage. Friday receptions must end no later than 11:00 p.m. At the South Hills Campus, Saturday receptions must end no later than 3:00 p.m.
- Space available for decorating the day before the wedding
- Setup and tear down of tables and chairs
- Onsite custodian
- Kitchen (training required)

Not included:

Please refer to the list of items not included for rehearsal dinners.

25% of the total reception rental fee is due within 30 days of date confirmation. Final payment is due within 60 days of your wedding date.